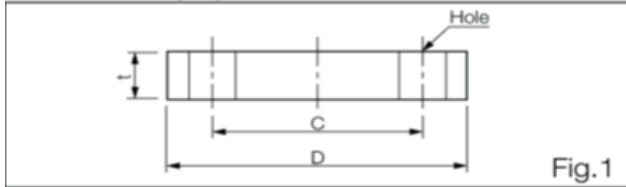




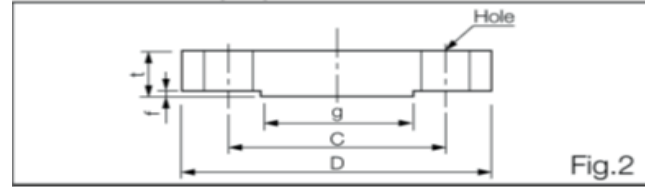
Flange

JIS FLANGE - ANSI FLANGE

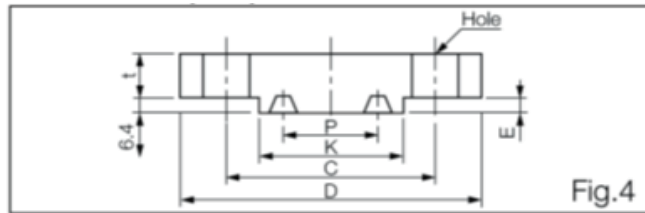
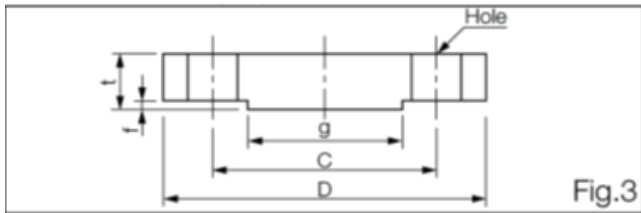
FLAT FACE (FF)



RAISED FACE (RF)



Flange Rating	Size A	Size B	D	t	f	g	C	f	No. of Bolt Holes	Hole Dia.	Bolt Size
JIS 5K	20	3/4	85	10	1	49	65	1	4	12	M10
	25	1	95	10	1	59	75	1	4	12	M10
	32	1 1/4	115	12	2	70	90	2	4	15	WH2
	40	1 1/2	120	12	2	75	95	2	4	15	WI12
JIS 10K	15	1/2	95	12	1	51	70	1	4	15	WI12
	20	3/4	100	14	1	56	75	1	4	15	WH2
	25	1	125	14	1	67	90	1	4	19	WI16
	32	1 1/4	135	16	2	76	100	2	4	19	WI16
	40	1 1/2	140	16	2	81	105	2	4	19	WH6

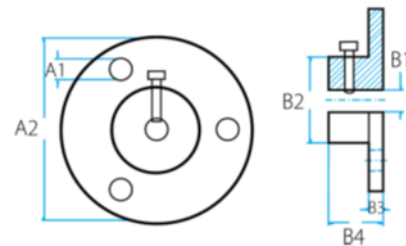


Flange	Size A	Size B	D	Wlin.t	f	g	C	No. Of Bolt Holes	Hole Dia.	Bolt Size (inch)	RTJ		
											Wlin.K	P	E
ANSI 150lbs	15	1/2	89	11.5	1.6	35.1	60.5	4	15.8	1/2	--	--	--
	20	3/4	99	13	1.6	42.9	69.9	4	15.8	1/2	--	--	--
	25	1	108	14.5	1.6	50.8	79.2	4	15.8	1/2	63.5	74.62	6.4
	32	1 1/4	117	16	1.6	63.5	88.9	4	15.8	1/2	73.5	57.15	6.4
	40	1 1/2	127	18	1.6	73.2	98.6	4	15.8	1/2	83	65.07	6.4
ANSI 300lbs	15	1/2	95	14.5	1.6	35.1	66.5	4	15.8	1/2	51	34.14	6.4
	20	3/4	117	16	1.6	42.9	82.5	4	19	5/8	63.5	42.88	6.4
	25	1	124	18	1.6	50.8	88.9	4	19	5/8	70	50.8	6.4
	32	1 1/4	133	19.5	1.6	63.5	98.6	4	19	5/8	63.5	60.32	6.4
	40	1 1/2	155	21	1.6	73.2	114.5	4	22.4	3/4	90.5	68.28	6.4
ANSI 400lbs & 600lbs	15	1/2	95	14.5	6.4	35.1	66.5	4	15.8	1/2	51	34.14	6.4
	20	3/4	117	16	6.4	42.9	82.6	4	19	5/8	63.5	42.88	6.4
	25	1	124	18	6.4	50.8	88.9	4	19	5/8	70	50.8	6.4
	32	1 1/4	133	21	6.4	63.5	98.5	4	19	5/8	79.5	60.32	6.4
	40	1 1/2	155	22.5	6.4	73.2	114.5	4	22.4	3/4	90.5	68.28	6.4
ANSI 900lbs & 1,500lbs	15	1/2	121	22.5	6.4	35.1	82.5	4	22.4	3/4	60.5	39.67	6.4
	20	3/4	130	25.5	6.4	42.9	88.9	4	22.4	3/4	67	44.45	6.4
	25	1	149	28.5	6.4	50.8	101.6	4	25.4	7/8	71.5	50.8	6.4
	32	1 1/4	159	28.5	6.4	63.5	111.3	4	25.4	7/8	81.5	60.32	6.4
	40	1 1/2	178	32	6.4	73.2	124	4	28.5	1	70	68.28	6.4



Flange

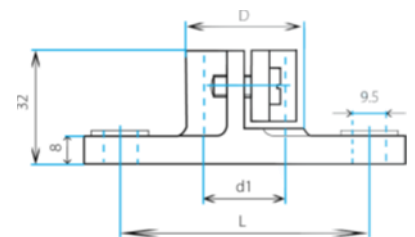
مشخصه	جنس فلنج	ابعاد				
		A1	A2	B1	B2	B3
AF-1	Aluminium	7	75	8	25	3
AF-2	Aluminium	4.6	50	6.6	20	5.2
AF-3	Aluminium	N/A	76.8	17.8	41	6.5
AF-4	SS316	N/A	58	TBC	19	1.5



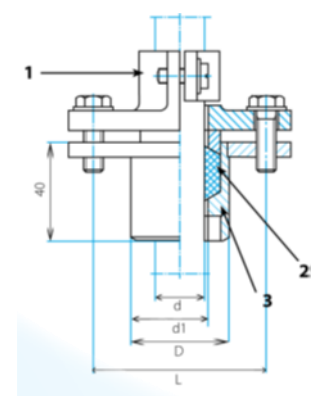
Mounting Brackets

پایه نگهدارنده

مشخصه	ابعاد			
	d	d1	D	L
MB1-15	15	16	35	55
MB1-22	22	23	40	70
MB1-32	32	33	50	70



مشخصه	ابعاد			
	d	d1	D	L
MB2-15	15	16	27	55
MB2-12	22	23	33	70
MB2-26/29	26/29	29	39	70
MB2-32	32	33	39	70



- 1 از جنس Cast steel با رنگ سیاه پودری
- 2 از جنس Steel 1.0401 با رنگ سایه پودری
- 3 از جنس PTFE و دمای 300 درجه سانتیگراد

